

**BENTLEY®**

**TYPECAST**





### **Typecast**

It may seem like a simple texture, but Typecast is more than a one-trick-pony. It's a workhorse. With each colorway washing from light to dark, Typecast turns the tables and delivers an inverse companion of dark to light; providing the ability to create complex visuals without complicating installations.



**TYPECAST™** 8EA24, CONFORMIST 801809, 18 IN X 36 IN - PARQUET

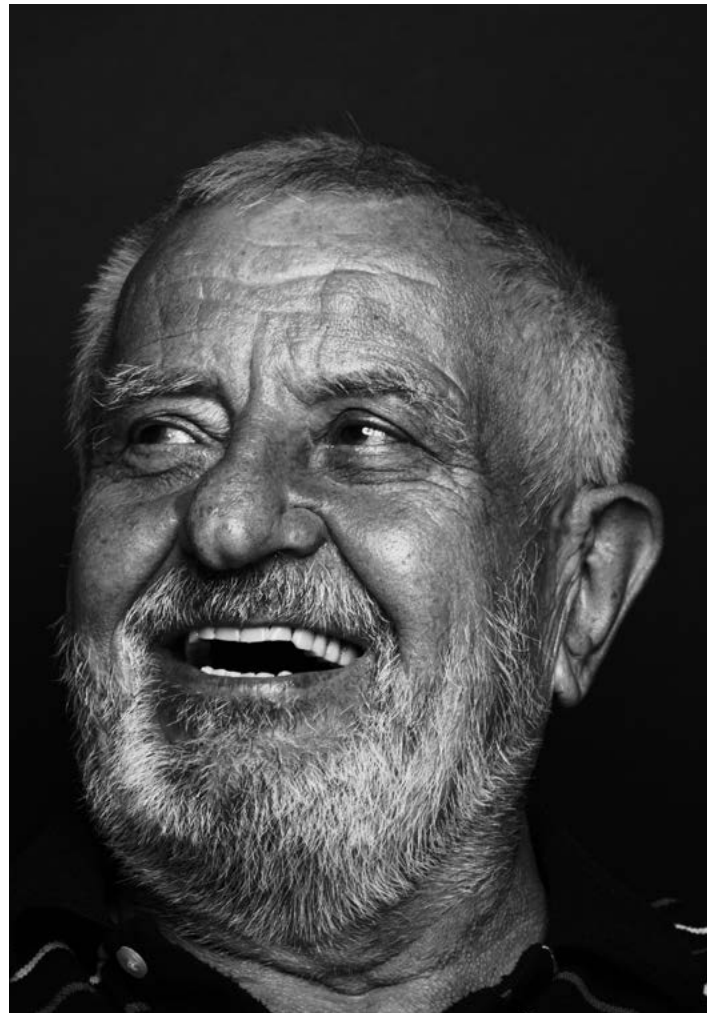


**TYPECAST** 8EA24, DEMURE 801800, 24 IN X 24 IN - BRICK





**TYPECAST** 8EA24, MODEST 801813, 18 IN X 36 IN - MONOLITHIC





**TYPECAST** 8EA24, PROGRESSIVE 801804, 24 IN X 24 IN - RANDOM

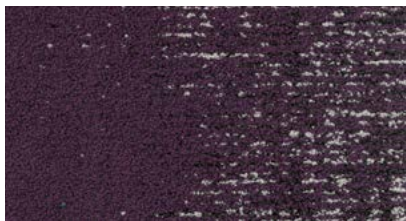


**TYPECAST 8EA24, REVISIONIST 801808, 18 IN X 36 IN - HERRINGBONE**

TYPECAST color line as featured in architect folder.



Demure 801800



Flamboyant 801801



Bias 801802



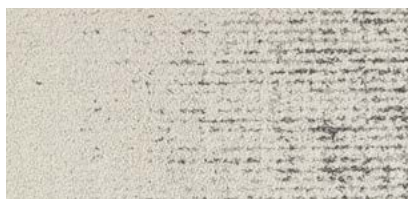
Impartial 801803



Progressive 801804



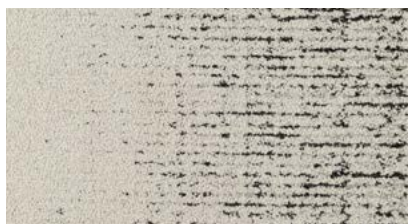
Conservative 801805



Simple 801806



Intricate 801807



Revisionist 801808



Conformist 801809



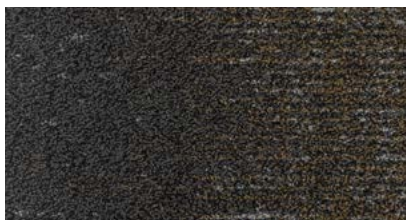
Loud 801810



Quiet 801811



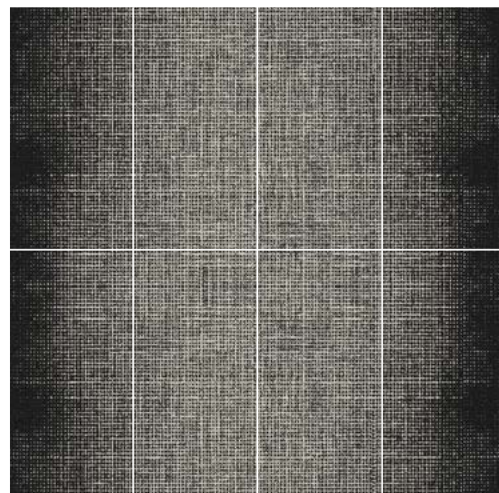
Bold 801812



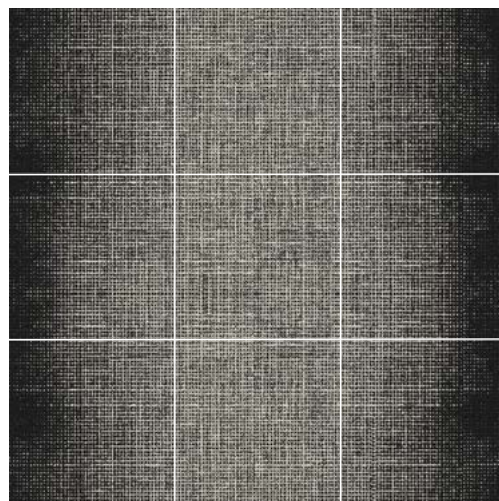
Modest 801813

### Typecast Full Width Repeat Tile Grid Views

The Typecast full width repeat consists of four separate tiles for size 18 in x 36 in, and three separate tiles for size 24 in x 24 in. Typecast will be sampled in two separate tiles to reflect a portion of the repeat. To view the full repeat, please refer to the Product Tile View on the website.



18 in x 36 in



24 in x 24 in

The printed images may not be an accurate reproduction of the product's actual colorways. We strive to offer an authentic representation, but images may vary according to press run and location lighting. These images are intended as a guide only. If you would like a sample of this product, please call Customer Care at 800.423.4709.

## THE SORTED COLLECTION

### SPECIFICATIONS

Style Number	8EA24
Product Construction	Tufted Textured Loop
Fiber	Antron® Lumena DNA™ Nylon Type 6,6
Dye Method	Solution Dyed
Backing Options	AFFIXX™ Hardback Tile AFIRMA II™ Hardback Tile NexStep® Cushion Tile
Size Options	18 in x 36 in (45.72 cm x 91.44 cm) 24 in x 24 in (60.96 cm x 60.96 cm)
Yarn Weight	24 oz/yd <sup>2</sup> (813.7 g/m <sup>2</sup> )
Machine Gauge	1/10 in (39.4 ends/10 cm)
Pile Height	
High	0.190 in (4.8 mm)
Medium	0.128 in (3.3 mm)
Low	0.082 in (2.1 mm)
Stitches	10.5/in (41.3 ends/10 cm)
Pile Density	7,969 oz/yd <sup>3</sup>
Total Weight	
AFFIXX™ Hardback Tile	83 oz/yd <sup>2</sup> (2,814.2 g/m <sup>2</sup> )
AFIRMA II™ Hardback Tile	82 oz/yd <sup>2</sup> (2,780.3 g/m <sup>2</sup> )
NexStep® Cushion Tile	101 oz/yd <sup>2</sup> (3,424.5 g/m <sup>2</sup> )
Total Thickness	
AFFIXX™ Hardback Tile	0.275 in (7.0 mm)
AFIRMA II™ Hardback Tile	0.270 in (6.9 mm)
NexStep® Cushion Tile	0.390 in (9.9 mm)
Pattern Repeat	None
Radiant Panel	Passes Class 1, $\geq 0.45$ W/cm <sup>2</sup> (ASTM-E648)
Smoke Density	< 450 Dm corr (ASTM-E662), Flaming
Static	$\leq 3.5$ kV (AATCC-134), Step
Flammability	Passes Methenamine Pill Test (CPSC-FF1-70)

CE Mark excludes AFFIXX™ Hardback Tile.



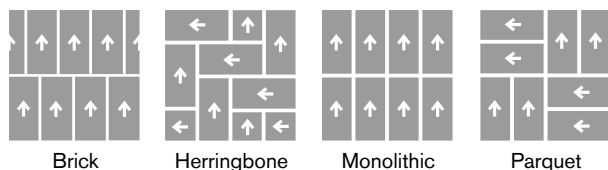
[COVER PHOTO]  
**TYPECAST** 8EA24, DEMURE 801800, 24 IN X 24 IN - BRICK

antron. 

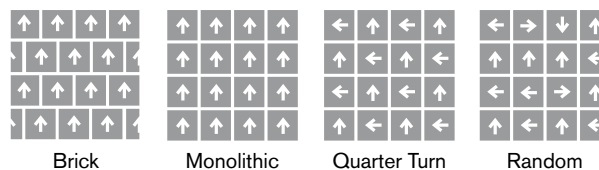


### RECOMMENDED CARPET TILE INSTALLATION METHODS

18 in x 36 in



24 in x 24 in



Bentley's carpet products are manufactured in our California mill, a LEED Existing Buildings: Operations and Maintenance Gold certified facility. Certificates for carpet products, including Cradle to Cradle™, NSF/ANSI Standard 140 - Sustainable Carpet Assessment (NSF 140), and CRI Green Label Plus are available in Certifications under the Sustainability section of our website. Information regarding our Environmental Product Declarations, Health Product Declarations, and Declare Labels can be found in Transparency under the Sustainability section of our website. For more information, including product warranties, please visit [www.bentleymills.com](http://www.bentleymills.com).

Patterned carpet may require special attention by the installer to assure a suitable match, and must be addressed in the original labor quotation. Repositioning of carpet tiles may be necessary to ensure light or dark lines do not align at the seams. Products that go through the shearing process may result in a small loss of yarn weight. Slight variations in color among different production lots are normal and should be considered in the overall installation plan. Carpet specifications and components are subject to normal manufacturing tolerances and may change without notice. Product warranted in accordance with the terms and conditions of Bentley's standard printed warranty in effect at time product is sold. All other warranties, including without limitation any implied warranties of merchantability or fitness for a particular purpose, are hereby disclaimed. Made in USA. Warning: unauthorized reproduction of this carpet design constitutes copyright infringement. ©2019 Bentley Mills, Inc.



**WRITE YOUR OWN STORY**

800.423.4709 | [BENTLEYMILLS.COM](http://BENTLEYMILLS.COM)

14641 E. DON JULIAN ROAD, CITY OF INDUSTRY, CA 91746