



BENTLEY®

OUTLIER



BENTLEY



Outlier



Think outside the box. Color outside the lines. Be bold, get creative and blur boundaries –in life and in design. With its dynamic scale, graphic pattern, deep texture and layers of metallic accents, **Outlier™** challenges traditional design conventions. Outlier plays perfectly with interiors' increasingly blended home/play/work spaces. Its unconventional geometric design gives the illusion of having grown over the highly textured, organic background –a unique pattern-over-background element that is as unexpected as it is elegant. Each of the 13 colorways carry inflections of silver, bronze, and gold, adding that spark we count on from all the best outliers.



OUTLIER 80U23, ENVIRONS 801677, 18 IN X 36 IN - BRICK

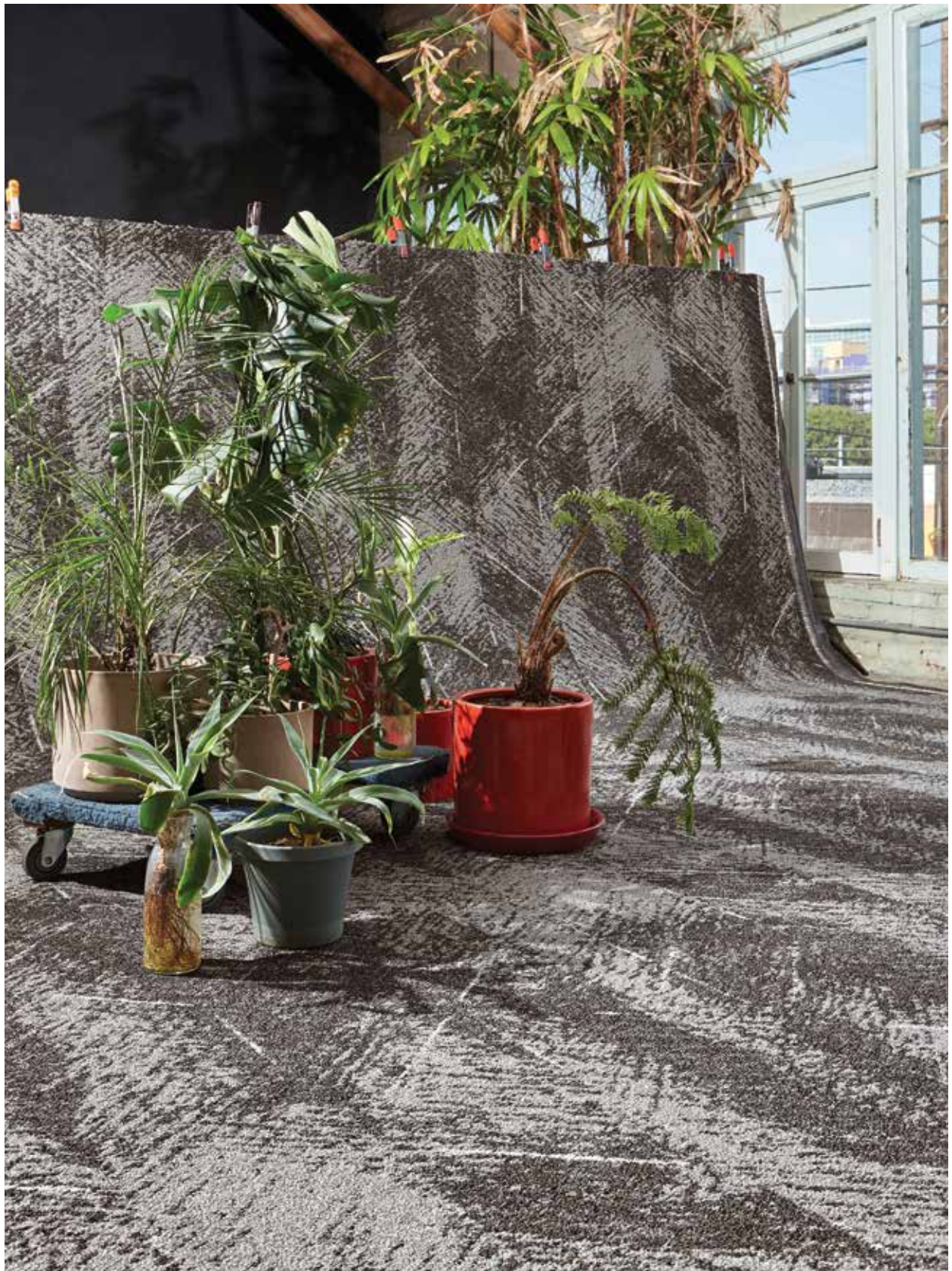


OUTLIER 80U23, EXTREMITY 801681 and BORDERLAND 801682, 9 IN X 36 IN - ASHLAR





OUTLIER 80U23, HABITAT 801671, 18 IN X 36 IN - HERRINGBONE



OUTLIER 80U23, HABITAT 801671, 12 FT - BROADLOOM

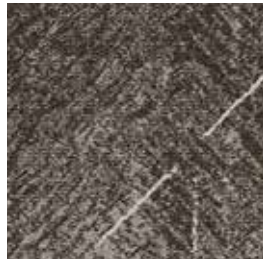


OUTLIER 80U23, ENVIRONS 801677 and FRINGE 801679, 9 IN X 36 IN - HERRINGBONE

OUTLIER™



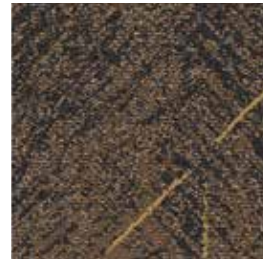
Frontier 801670



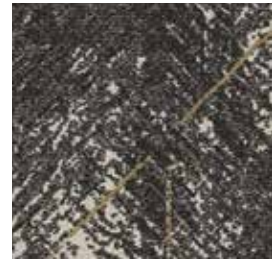
Habitat 801671



Verge 801672



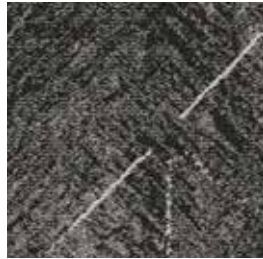
Territory 801673



Brink 801674



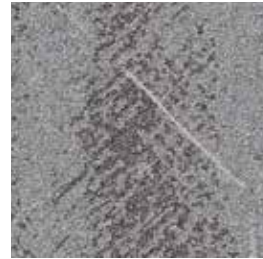
Margin 801675



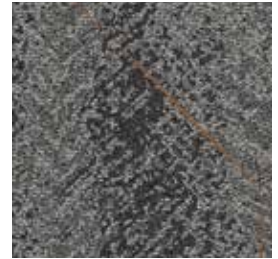
Vicinity 801676



Environs 801677



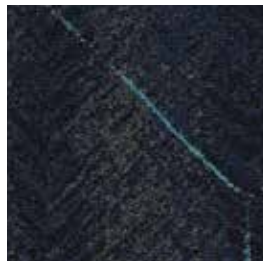
Subdivision 801678



Fringe 801679



Perimeter 801680



Extremity 801681



Borderland 801682

Style Number	8OU23
Product Construction	Tufted Textured Loop
Fiber	Bentley Premium™ Nylon
Dye Method	Solution Dyed

For complete product specifications, visit bentleymills.com

PVC Free Backing Options

AFIRMA II™ Hardback Tile
AFFIXX™ Hardback Tile
LuxFelt™ Cushion Tile
NexStep® Cushion Tile
High PerformancePC Broadloom

Size Options

9 in x 36 in, 18 in x 36 in, 24 in x 24 in
9 in x 36 in, 18 in x 36 in, 24 in x 24 in
9 in x 36 in, 18 in x 36 in, 24 in x 24 in
9 in x 36 in, 18 in x 36 in, 24 in x 24 in
12 ft



CE Mark excludes AFFIXX™ Hardback Tile.

The printed images may not be an accurate reproduction of the product's actual colorways. We strive to offer an authentic representation, but images may vary according to press run and location lighting. These images are intended as a guide only. If you would like a sample of this product, please call Customer Care at 800.423.4709.

Bentley's carpet products are manufactured in our California mill, a LEED Existing Buildings: Operations and Maintenance Gold certified facility. Product Certifications and Declarations can be found under the Sustainability section of our website. For more information, including additional backing options, detailed specifications, and warranties, please visit bentleymills.com.



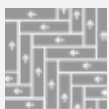
OUTLIER 80U23, FRINGE 801679, 24 IN X 24 IN - QUARTER TURN

Recommended Carpet Tile Installation Methods

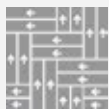
9 in x 36 in



Ashlar



Herringbone



Double
Herringbone

18 in x 36 in



Ashlar



Brick



Herringbone



Monolithic

24 in x 24 in



Ashlar



Brick



Monolithic



Quarter Turn

Carpet specifications and components are subject to normal manufacturing tolerances and may change without notice. Product warranted in accordance with the terms and conditions of Bentley's standard printed warranty in effect at time product is sold. All other warranties, including without limitation any implied warranties of merchantability or fitness for a particular purpose, are hereby disclaimed. Made in USA. Warning: unauthorized reproduction of this carpet design constitutes copyright infringement. ©2023 Bentley Mills, Inc.

Need additional samples or information? 800.423.4709 | [bentleymills.com](https://www.bentleymills.com)

(BK-CP-0923)

BENTLEY®

BENTLEY

800.423.4709 | BENTLEYMILLS.COM

14641 EAST DON JULIAN ROAD, CITY OF INDUSTRY, CALIFORNIA 91746